



LUXE ATELIER

MILANO

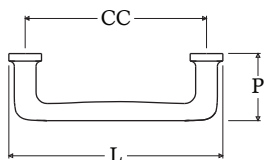
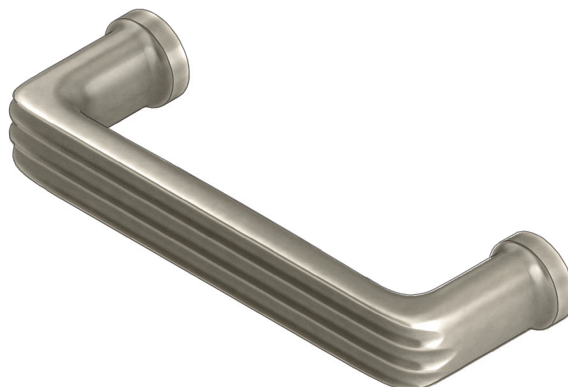


Maniglia Serie Fluted  
Fluted Series Cabinet Pull Handle

Dimensioni  
Dimensions

|    | L   | CC  | P  | W  |
|----|-----|-----|----|----|
| XS | 76  | 64  | 26 | 11 |
| S  | 95  | 80  | 31 | 14 |
| M  | 113 | 96  | 36 | 16 |
| L  | 132 | 112 | 40 | 19 |
| XL | 151 | 128 | 45 | 21 |

Dimensioni in millimetri  
Dimensions given in millimeters



Fornita con viti M4.  
Disponibile in tutte le finiture standard.  
Dimensioni e finiture su misura disponibili su richiesta.  
*Regularly furnished with M4 screws. Additional sizes available by special order.  
Available in standard and custom finishes.*